

QUICK SELECTION / Selezione veloce

input speed (n_1) = 1400 min⁻¹

| Output Speed n_2 [min ⁻¹] | Ratio i | Motor power P_{1M} [kW] | Output torque M_{2M} [Nm] | Service factor f.s. | Nominal power P_{1R} [kW] | Nominal torque M_{2R} [Nm] | Available B5 motor flanges | | Available B14 motor flanges | | | Dynamic efficiency RD | Tooth Module [mm] | Ratios code |
|---|--------------|---------------------------------|-----------------------------------|------------------------|-----------------------------------|------------------------------------|----------------------------|----|-----------------------------|-----|----|---------------------------------|----------------------|-------------|
| | | | | | | | -B | -C | -O | -P | -Q | | | |
| | | | | | | | 63 | 71 | 56 | 63 | 71 | | | |
| 5.6 | 252 | 0.25 | 198 | 1.5 | 0.38 | 304 | B | | B-C | B-C | | 46 | 2.7 | 01 |
| 3.9 | 360 | 0.25 | 258 | 1.2 | 0.29 | 304 | B | | B-C | B-C | | 42 | 2.7 | 02 |
| 2.8 | 504 | 0.18 | 241 | 1.3 | 0.23 | 304 | B | | B-C | B-C | | 39 | 2.7 | 03 |
| 1.9 | 756 | 0.12 | 204 | 1.5 | 0.18 | 304 | B | | B-C | B-C | | 33 | 2.7 | 04 |
| 1.4 | 1008 | 0.12 | 256 | 1.2 | 0.14 | 304 | B | | B-C | B-C | | 31 | 2.7 | 05 |
| 1.1 | 1332 | 0.12 | 327 | 0.9 | 0.11 | 304 | B | | B-C | B-C | | 30 | 2.7 | 06 |
| 0.8 | 1656 | 0.12* | 304 | <0.8 | 0.10 | 304 | B | | B-C | B-C | | 28 | 2.7 | 07 |
| 0.6 | 2160 | 0.12* | 304 | <0.8 | 0.08 | 304 | B | | B-C | B-C | | 26 | 2.7 | 08 |
| 0.6 | 2520 | 0.12* | 304 | <0.8 | 0.07 | 304 | B | | B-C | B-C | | 25 | 2.7 | 09 |

A) Motor Flanges Available
Flange Motore Disponibili

B) Supplied with Reduction Bushing
Fornito con Bussola di Riduzione

B) Available on Request without reduction bushing
Disponibile a Richiesta senza Bussola di Riduzione

C) Motor Flange Holes Position
Posizione Fori Flangia Motore

* Power higher than the maximum one which can be supported by the gearbox. Select according to the torque M_{2R}
Potenza superiore a quella massima sopportabile dal riduttore. Selezionare in base al momento torcente M_{2R}

EN Unit **6A4** is supplied with synthetic oil, providing "long life" lubrication. For mounting position V5-V6 please contact us. See table 1 for lubrication and recommended quantity. In table 2 please see possible radial loads and axial loads on the gearbox.

I Il riduttore tipo **6A4** viene fornito lubrificato a vita con olio sintetico. Per posizioni V5-V6 contattare il ns. servizio tecnico. Vedi tab.1 per oli e quantità consigliati. In tab.2 sono presenti i carichi radiali e assiali applicabili al riduttore.

D Für die Lebensdauerschmierung ist das Getriebe der Größe **6A4** mit synthetischem Öl befüllt. Bei Einbaulage V5 oder V6 bitten wir um Rücksprache. In Tabelle 1 ist die Schmiermenge und das empfohlene Schmiermittel angegeben. In Tabelle 2 sind die zulässigen Radial- und Axialbelastungen des Getriebes aufgeführt.

F Le réducteur de type **6A4** est fourni lubrifié à vie avec de l'huile synthétique. Concernant les positions V5.V6, contactez notre service d'assistance technique. Voir tableau 1 concernant les huiles et les quantités conseillées. Les charges radiales et axiales applicables au réducteur sont précisées dans le tableau 2.

E El reductor tamaño **6A4** se suministra, lubricado de por vida con aceite sintético. Para las posiciones V5 y V6 contactar con nuestro servicio técnico. Ver tabla 1, para cantidades y aceites recomendados. En la tabla 2, se encuentran las cargas radiales y axiales admitidas por el reductor.

■ LUBRICATION 6A4 Oil 0.40 Lt.

Quantity 0.40/0.09 Lt. 0.09 Lt.

| | |
|----------------------------|------------------------------|
| AGIP Telium VSF 320 | SHELL Omala S4 WE 320 |
|----------------------------|------------------------------|

For all details on lubrication and plugs check our website tab. 1
Per maggiori dettagli su lubrificazione e tappi olio vedi il nostro sito web

■ RADIAL AND AXIAL LOADS

Output shaft
Albero di uscita

| n_2 [min ⁻¹] | FA [N] | FR [N] |
|-------------------------------|-----------|-----------|
| 25 | 700 | 3800 |
| 15 | 800 | 4000 |

Input shaft
albero in entrata

| n_1 [min ⁻¹] | FA [N] | FR [N] |
|-------------------------------|-----------|-----------|
| 1400 | 42 | 210 |

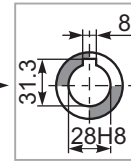
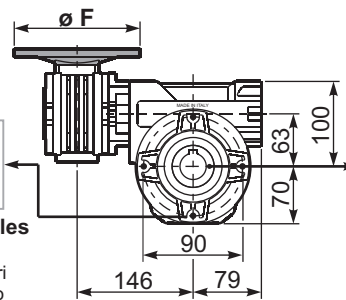
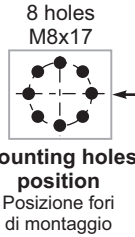
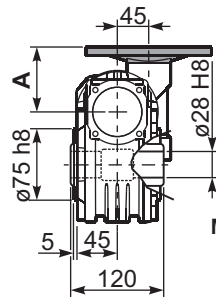
*Strong axial loads in the DX direction are not allowed.
Non sono consentiti forti carichi assiali con direzione DX

tab. 2

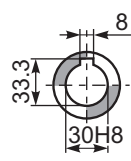
3D dimensions on request

P6A4FB... Basic wormbox
Riduttore base

| M. flanges | Kit code | øF | A |
|------------|------------|-----|------|
| 63B5 | K050.4.041 | 138 | 74 |
| 71B5 | K050.4.042 | 160 | 71.5 |
| 56B14 | KC40.4.049 | 80 | 71.5 |
| 63B14 | K050.4.047 | 90 | 74 |
| 71B14 | K050.4.045 | 105 | 71.5 |



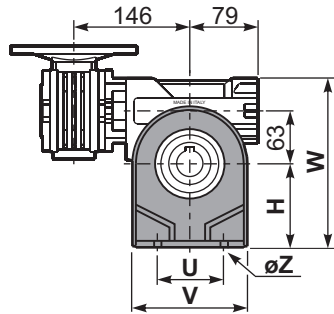
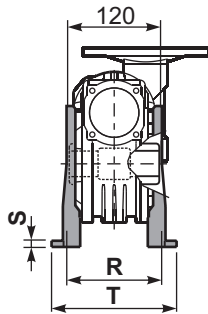
Standard
Hollow shaft



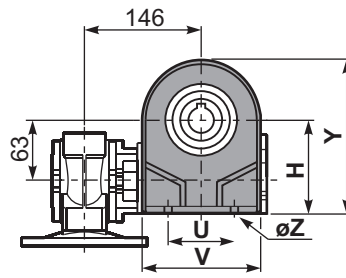
On request
A richiesta

Gearbox weight
peso riduttore **8.90 kg**

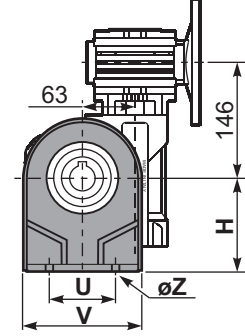
P6A4PA... Feet
Piedini



P6A4PB... Feet
Piedini

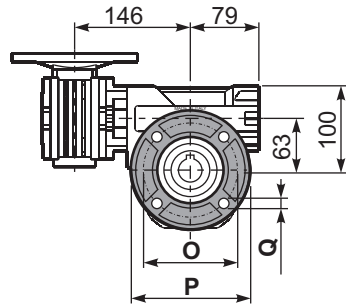
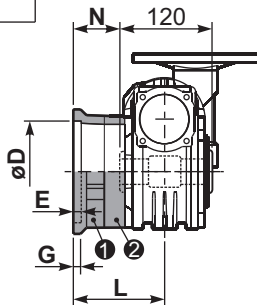


P6A4PV... Feet
Piedini



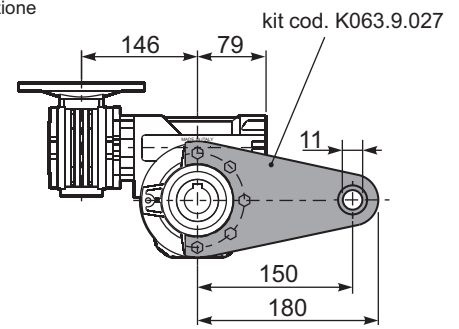
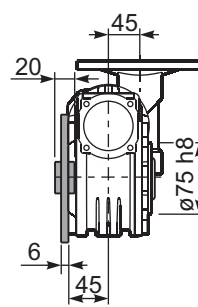
| | H | R | S | T | U | V | Y | W | øZ | kit code |
|--------|-----|-----|----|-----|-----|-----|-----|-----|-----|------------|
| type B | 115 | 115 | 12 | 142 | 120 | 156 | 185 | 215 | ø11 | K070.9.022 |
| type S | - | - | - | - | - | - | - | - | - | - |

P6A4FC... Output flange
Flangia uscita

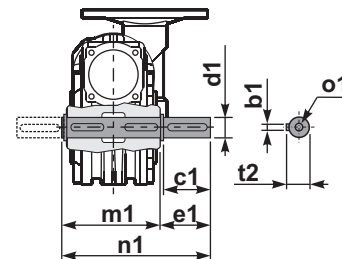


| type B | øD | E | G | L | N | O | P | Q | kit code |
|--------|---|---|------|------|------|-----|-----|----|------------------------------|
| FC | 130 ^{+0.20} / _{+0.15} | 7 | 13 | 85 | 25 | 165 | 200 | 13 | 1 K070.9.010 2 - |
| FL | 130 ^{+0.20} / _{+0.15} | 7 | 13 | 111 | 51 | 165 | 200 | 13 | 1 K070.9.010 2 K070.0.200 |
| type S | øD | E | G | L | N | O | P | Q | kit code |
| F1 | 130 ^{+0.20} / _{+0.15} | 7 | 13 | 111 | 51 | 165 | 200 | 13 | 1 KS070.9.014 2 - |
| F2 | 115 ^{+0.20} / _{+0.15} | 7 | 13 | 116 | 56 | 150 | 175 | 11 | 1 KS063.9.013 2 - |
| F3 | 110 ^{+0.035} / ₀ | 5 | 13.5 | 84.5 | 24.5 | 130 | 160 | 11 | 1 KS070.9.011 2 - |

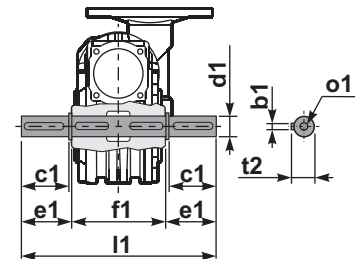
P6A4BR... Reaction arm
Braccio di reazione



P6A4....S... Single Shaft
Albero lento semplice



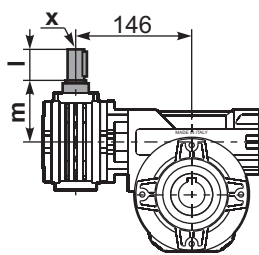
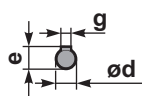
P6A4....D... Double Shaft
Albero lento bisp.



1 kit cod. K070.5.028 type B

2 kit cod. K070.5.029 type B

R6A4FB... Input shaft
Albero in entrata



| | ød | e | g | l | m | x | kit code |
|--------|-------|------|---|----|----|---|----------------------|
| type B | 11 h6 | 12.5 | 4 | 30 | 68 | - | 1 2 K045.5.006 PAM71 |
| type S | - | - | - | - | - | - | 1 2 - |

| | b1 | c1 | d1 | e1 | f1 | l1 | m1 | n1 | t2 | o1 |
|--------|----|----|--|------|-----|-----|-------|-----|----|-------|
| type B | 8 | 60 | 28 ^{-0.005} / _{-0.020} | 63.5 | 120 | 247 | 127.5 | 191 | 31 | M8x20 |
| type S | - | - | - | - | - | - | - | - | - | - |